

Just as
Shane
Donovan
returns from
the 'dead',
two bomb-
shells drop
in Patsy
Pease's
private life
and she's
forced to leave
DOOL — twice!

SHANE'S

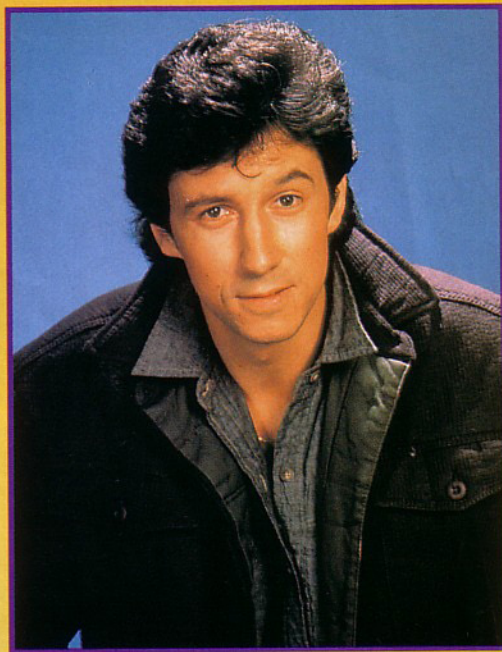
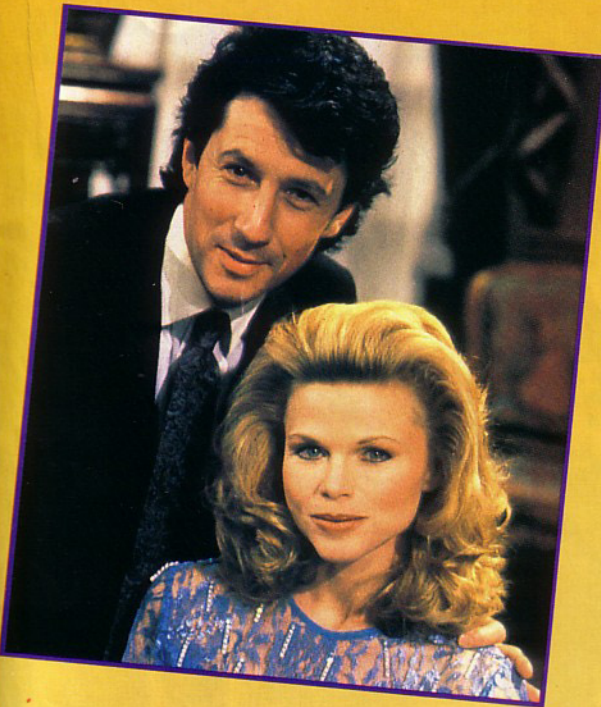
Days Of Our Lives' viewers—get ready for a new Kimberly Donovan! It happens on our screens soon as Charles Shaughnessy (who plays her husband, Shane Donovan) has to come to grips with a replacement for Patsy Pease. But viewers won't see the private agony that led to Patsy's being temporarily forced off the show. As Kimberly is thrown into a storyline that threatens to destroy her world, we see Patsy at the start of one of her own most traumatic times. Indeed, things got so rough she was forced to leave the show twice—once even being admitted to a psychiatric hospital.

During the shooting of these controversial scenes—with the pregnant Kimberly forced to consider abortion—Patsy's castmates and US fans were alerted to the star's own trauma.

For Charles, shooting the tense pregnant storyline involved some of the most difficult scenes he's had since joining *DOOL* in 1984.

"Yeah, one day I was shooting a love scene with Patsy and the next day I was in bed with a different woman!" he said. Anne Howard, from the rival US soap *Another World*, took over as Kimberly during Patsy's absence.

Shane and Kimberly have battled blindness, infidelity and near-death many times to be together. And, until their current storyline, they've succeeded.



'I was shooting a love scene with Patsy and next day I was in bed with a different woman!'

BACK . . . BUT PATSY'S OUT!

Now with Cal Winters (Wortham Krimmer) on the scene, their idyllic relationship is being tested again. In upcoming episodes the plot thickens as a distraught Kimberly learns she's pregnant but she doesn't know who the father is.

The latest obstacle could prove the downfall of their eight-year love affair. And with Patsy's off-screen crisis during shooting fans will be even more intrigued about the outcome. When *DOOL* writers were planning the gripping scenario, Patsy had fallen pregnant with her second child. Under strong medical advice Patsy refused to shoot the storyline claiming the emotions it stirred up could be detrimental to her own unborn baby. The show refused to change the script and Patsy stormed off set . . . and stayed away for almost a year.

"I made the right decision to leave!" she said. "If it meant saving my baby's life then it's been worth it."

As it turned out, those words couldn't be more true. In the final months of her pregnancy Patsy learned her baby had a herniated diaphragm and would need urgent surgery immediately after birth.

Three months after her son was born Patsy returned to *DOOL*. But her long-awaited comeback ended

just as abruptly as her controversial departure a year before. After collapsing on set several times Patsy was this time forced to confront the ugly truth of her childhood.

"I was raised by a psychotic mother. And for 30 years I'd blocked from my memory the abuse and torture I suffered."

Patsy's private hell shocked fans and when she again quit the show, *DOOL* viewers thought that was the last they'd see of the tiny star. "At that point I just wanted to focus on being a good mother and wife. I didn't want to become even remotely like the mother I had."

During her second time away Patsy experienced the joy of seeing her youngest son take his first steps. "The doctors didn't expect him to ever walk. They said if he ever did he would walk stooped over or crooked. But now he's running!"

Her months off-screen weren't idle. She wrote down her painful childhood memories and with the help of a literary agent turned her personal diary into a moving story that's been bought by NBC for a TV movie. Shooting is expected to begin soon — with Patsy in the lead role. "At first I didn't want to play myself. But for people to believe in it, I had to. I'm not doing this for the money, I'm doing it for my own healing, as

well as helping others out there in the same situation."

"I've sorted out a lot of problems in my life — off set and on. I had long talks with my husband about going back to the show and I sat down with Ken (Corday, exec producer) and the writers and smoothed over whatever feathers had been ruffled in the past."

Her return comes after the shock departure in the US of Mary Beth Evans who's still seen here as Kimberly's sister, Kayla.

"You know, I was shocked when I heard about Mary Beth. Charlie (Charles Shaughnessy has also shot his last scenes on the show) told me but I thought he was joking. I couldn't believe they just let her go."

With the exit of several key Salem characters there's no doubt producers are counting on Patsy's huge popularity to boost ratings.

"Sure, it'd be great if ratings went up. But don't forget not so long ago I was in a psychiatric hospital. I really don't think I'm prime material for boosting ratings, do you?"

And with her leading man also gone, Patsy isn't sure how fans will react to her new storyline.

But that's three years away for Aussie fans. We're about to be treated to the pregnancy story.

— VESNA